

# FEEDING HABITS OF *Lutjanus synagris* (TELEOSTEI: LUTJANIDAE) IN THE AMAZON COAST OF THE NORTHEAST REGION OF BRAZIL\*

Jackellynne Fernanda Farias FERNANDES<sup>1\*</sup> 

Jailza FREITAS<sup>1</sup> 

Yago Bruno Silveira NUNES<sup>2</sup> 

Rafael Santos LOBATO<sup>3</sup> 

Marina Bezerra FIGUEIREDO<sup>3</sup> 

<sup>1</sup> Universidade Estadual do Maranhão - UEMA, Programa de Pós-graduação em Recursos Aquáticos e Pesca. Cidade Universitária Paulo VI, Av. Lourenço Vieira da Silva, 1.000, Jardim São Cristóvão, CEP: 65.055-310, São Luís, MA, Brazil. jackellynneffernandes@gmail.com (\*corresponding author)

<sup>2</sup> Universidade Federal Rural da Amazônia - UFRA, Programa de Pós-Graduação em Aquicultura e Recursos Aquáticos Tropicais. Av. Presidente Tancredo Neves, 2501, Terra Firme, CEP: 66.077-530, Belém, PA, Brazil.

<sup>3</sup> Universidade Estadual do Maranhão - UEMA, Departamento de Engenharia de Pesca. Cidade Universitária Paulo VI, Av. Lourenço Vieira da Silva, 1.000, Jardim São Cristóvão, CEP: 65.055-310, São Luís, MA, Brazil.

\*Article concerning the 1<sup>st</sup> chapter of the Master Dissertation of the FERNANDES, J.F.

Received: October 26, 2019

Approved: January 08, 2021

## ABSTRACT

The feeding habit of lane snapper *Lutjanus synagris* was analyzed qualitatively and quantitatively, related to seasonality, its ontogenetic development, and the relationship between food and biotic and abiotic conditions on the Amazon Coast of Maranhão, between June 2018 and May 2019. Numerical, gravimetric, and ecological index methods were used to show the relative importance or preference of a category or food item in the diet. The food composition was studied related to the sex, size of the predator and seasonality. Of 359 stomachs sampled, 54 were empty due to regurgitation and presented a vacuity coefficient (Cv%) of 15.04%. In the analysis of diets between the sexes, it was possible to identify a greater participation of fish (30.43%) and Crabs (26.10%) for females, Shrimp (36.23%) and Organic Matter Not Identified (OMNI) (18.84%) in males. The diet showed spatial differences in length distributions. The analysis of stomach contents showed the presence synthetic materials (mesoplastics ranging from 5.0 mm to 2.5 cm) in 5.52% of the samples. The main food items found were from the Brachyura and Caridea species. The results clearly demonstrate that lane snapper prefers benthic prey, presenting a carnivorous and generalist-opportunistic habit. Its diet is also composed of demersal-pelagic species, such as Cephalopods and Teleost fish.

**Keywords:** Lane snapper; diet; trophic dynamics; size-related diet shift; polymers.

## HÁBITOS ALIMENTARES DE *Lutjanus synagris* (TELEOSTEI: LUTJANIDAE) NA COSTA AMAZÔNICA DA REGIÃO NORDESTE DO BRASIL

### RESUMO

O hábito alimentar do ariacó *Lutjanus synagris* foi analisado qualitativamente e quantitativamente, relacionados à sazonalidade, seu desenvolvimento ontogenético e a relação entre alimento e condições bióticas e abióticas na Costa Amazônica do Maranhão, entre junho 2018 e maio de 2019. Métodos numéricos, gravimétricos e índices ecológicos foram usados para mostrar a importância ou preferência relativa de uma determinada categoria ou item alimentar na dieta. Foi analisada a variação na composição alimentar em relação ao sexo, tamanho do predador e sazonalidade. Dos 359 estômagos amostrados, 54 estavam vazios por regurgitação e apresentaram coeficiente de vacuidade (Cv%) de 15,04%. Na análise das dietas entre os sexos, foi possível identificar uma maior participação de peixes (30,43%) e caranguejos (26,10%) para fêmeas, camarões (36,23%) e Material Orgânico Não Identificado (OMNI) (18,84%) nos machos. A dieta da espécie mostrou diferenças espaciais particulares nas distribuições de comprimento. A análise do conteúdo estomacal mostrou presença materiais sintéticos (mesoplásticos variando de 5 mm a 2,5 cm) em 5,52% das amostras. Os principais itens alimentares encontrados foram de espécies dos grupos Brachyura e Caridea. Os resultados claramente demonstram que o ariacó tem preferência por presas bentônicas, apresentando hábitos carnívoro e generalista-oportunista. Sua dieta também é composta por espécies demersal-pelágicas, como cefalópodes e peixes teleósteos.

**Palavras-chave:** Ariacó; dieta; dinâmica trófica; mudança de dieta relacionada ao tamanho; polímeros.

## INTRODUÇÃO

The Lutjanidae species are part of one of the main marine fishing resources in tropical and subtropical areas from the western Atlantic, central-eastern United States, and Bermuda, including the Caribbean and the Gulf of Mexico and the entire coast of Brazil (Grimes, 1987; Hoese and Moore, 1998; Duarte and Garcia, 1999). They are widely exploited in Northeast Brazil by the commercial fishing, both for the volume of

production obtained, as well as for their great economic importance and high market value (Rezende et al., 2003; Dorenbosch et al., 2005). Among the main fishery production systems on the Amazon coast, those that focus on snapper stand out (Isaac and Barthem 1995; Isaac-Nahum, 2006; Bentes et al., 2012; Gomes et al., 2012).

The Lutjanidae family is composed of fish considered as opportunistic predators, which are particularly important in the environment because they perform an ecological control function (Sale, 1991; Mora, 2015) consuming a variety of prey and exhibiting an ontogenetic change in their diets as they become mature (Szedlmayer and Lee, 2004; McCawley et al., 2006; Wells et al., 2008). Many species are marine migrants and part of their life is associated with coastal systems (Ferreira et al., 2004; Cerqueira et al., 2017).

The lane snapper *Lutjanus synagris* (Linnaeus, 1758) during its early stages of development are relatively common in coral, rock, and estuarine areas since this environment present favorable conditions and structural complexity for refuge during its early and juvenile phase (Nagelkerken et al., 2000). Adult fish prefer reef areas, platforms, or continental slopes (Costa et al., 2005; Frédou and Ferreira, 2005; Klippel et al., 2005; Frédou et al., 2009), as they are areas where trophic interactions occur between organisms of different species at different stages of the life cycle (Layman, 2000).

Studies on the trophic ecology of Lutjanidae and the relationship with the environment enable the development of a functional representation of the ecosystem for its management (Duarte and Garcia, 1999). In addition, the food ecology of fish based on the analysis of stomach contents is essential for understanding their nutritional demands and interactions with the environment and other organisms (Pimentel and Joyeux, 2010).

As they are classified as high-quality fish, the fishing activities of these resources in the Northeast region of Brazil are intense, making these species vulnerable to overfishing, increasing their levels of exploitation (Lessa et al., 2004; Klippel et al., 2005; Bezerra and Godelman, 2014) and raise concerns about the preservation of fish stocks in coastal areas. Thus, information on the trophic dynamics of *L. synagris* may allow the development of models of functional ecosystems and assist on its management and conservation of the species (Duarte and Garcia, 1999).

In view of the importance of this resource in the studied region and the scarcity of information about its biological aspects, the present study aimed to qualitatively and quantitatively assess the dietary spectrum of *L. synagris* related to seasonality, its ontogenetic development, and the relationship between the food and biotic/abiotic conditions on the Amazon coast in the state of Maranhão, Brazil. For this, the hypothesis was tested that seasonality and body size are important factors for changes in the composition of *L. synagris* diet in the study area.

## MATERIAL AND METHODS

### Study area

The coast of the state of Maranhão, Brazil, is approximately 640 km long and has a large continental platform, with shallow

coastal waters that are directly affected by large river basins. The western region of the state coast contains the Maranhão coastline recess, which is a long area of corals, mangroves, and islands; and the east region contains large and small plains with lagoons among dunes (Lençóis Maranhenses National Park), mangroves, and an area termed Delta of Americas (Stride, 1992; Saraiva, 2009). The Amazon Coastal Zone is the highest continuous area of mangrove in the world, with approximately 8,900 km<sup>2</sup>; 50% of this area is in the Maranhão Coastal Zone (Kjerfve et al., 2002).

The samples come from the captures by artisanal fisheries in the state of Maranhão, covering Barra de Guajerutiuva (01°30'28.56"S, 44°43'10.41"W), Bate Vento (1°17'57.85"S, 44°53'34.45"O), Raposa (02°25'23"S, 44°06'12"O), Santana Island (2°17'26.38"S, 43°41'07.46"O), Parcel de Manuel Luís (0°53'52.66"S, 44°17'06.96"O), which are in the region classified as Legal Amazon (Figure 1) (IBGE, 2014).

The hydrographic and climatic status of the region, and the characterization of seasonality were based on temperature and rainfall data available by the Geoenvironmental Center of the State University of Maranhão and by the National Institute of Meteorology (INMET). The climate of the region is tropical, characterized by a dry mild winter and a hot rainy summer (Peel et al., 2007).

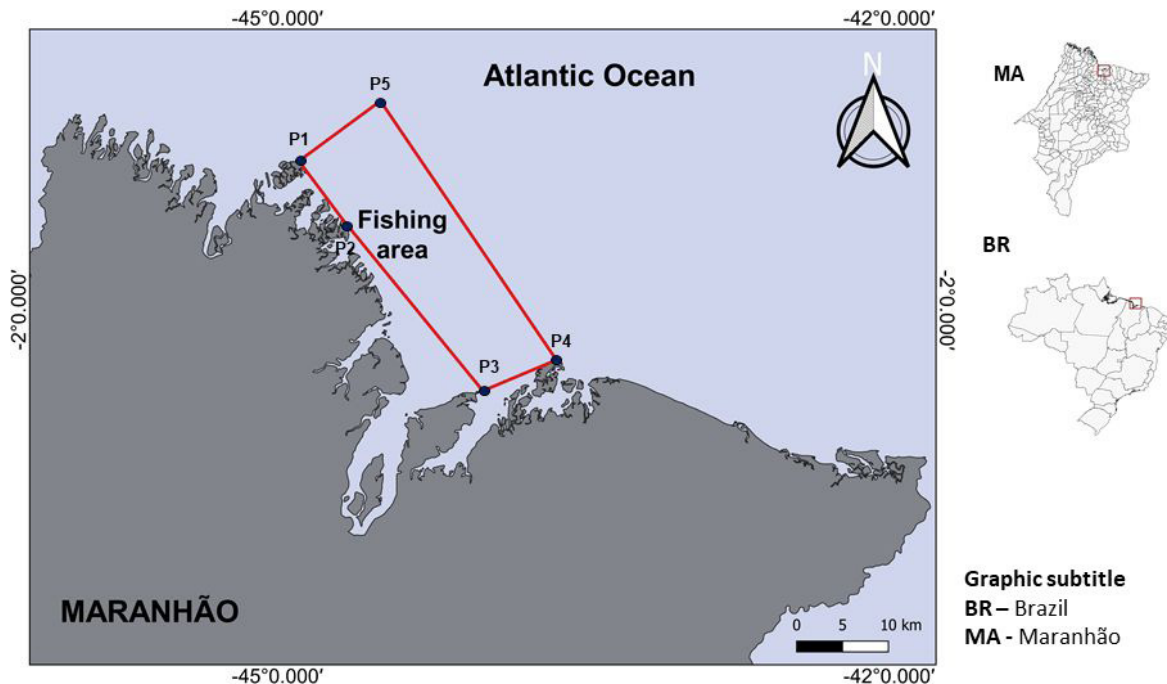
### Sample collection and data analysis

The fish were captured monthly (June 2018 to May 2019) using a standard set of handlines (0.80 and 0.100 mm) equipped with hooks (nº. 7 and 8), respectively, a 500-meter gillnets (0.60 mm mesh) and acquired by purchasing them from fishers in the municipality of Raposa. The samplings were authorized by the Chico Mendes Institute for Biodiversity Conservation (ICMBio) through the license of the Biodiversity Authorization and Information System (SISBio) nº 65644-1.

All specimens were measured to obtain their total length ( $T_L$ ) and weight ( $T_w$ ). Subsequently, they were eviscerated for confirmation of their sex and removal of their stomachs. The maturity categories of juvenile and adult were differentiated through the analysis of the gonadal maturation for both sexes, which was based on Brown-Peterson et al. (2011), Lowerre-Barbieri et al. (2011) and Santana (2016). The specimens were selected for analysis of stomach contents and distributed into length classes according to the formula of Sturges (1926).

The stomach items of each fish were preserved in 5% formaldehyde, identified, and classified by using specific identification keys, according to Fischer (1978), Cervigón et al. (1992), Castro (1997), Menezes et al. (2003), Lavrado and Sa Viana (2007), and Almeida (2008). The adult organisms found were counted separately, and teleosts at larval and juvenile stages were identified according to Carpenter (2002a; 2002b) and database of identified species of the Fishbase.

The quantification of the stomach items was done through the number of anatomical fragments, when possible. Specimens that presented empty stomachs were subjected to vacuity calculations [ $Cv\% = (\text{number of empty stomachs} / \text{total number of evaluated stomachs}) \times 100$ ] (Falautano et al., 2007). The importance of the



**Figure 1.** Location of the sampling area (P1. Barra de Guajerutia; P2. Bate Vento; P3. Raposa; P4. Santana Island; P5. Parcel de Manuel Luís).

different prey types found was evaluated by using the following relative measures of prey quantity (RMPQs): percentage of occurrence frequency [ $FO\% = (\text{number of stomachs containing a prey item} / \text{total number of not empty stomachs}) \times 100$ ]; percentage of abundance ( $Fni\% = [\text{number of s of a prey item} / \text{total number of all of prey items}] \times 100$ ); percentage weight of the items [ $Wi\% = (\text{weight of the prey item} / \text{total weight of all prey items}) \times 100$ ]. Based on the values of the RMPQs we estimated the index of relative importance (IRI) (Pinkas et al., 1971), using the weight instead of volume [ $IRI\% = (N\% + Wi\%) \times (F\%)$ ]. The numerical and gravimetric methods were applied following the methodology of Hacunda (1981) and Fonteles Filho (2011), adopting a repletion degree (0 = empty, 1 = 25% full, 2 = 50% full, 3 = 75% full, and 4 = completely full) and a digestion degree (completely digested, semi-digested, and not digested). The polymers in the *L. synagris* diet were identified and classified based on Montagner (2018).

The feeding resources were subjected to similarity analysis using the Bray-Curtis coefficient. The dominance of the items was obtained through the Simpson index (Simpson, 1949). The diversity of the items was calculated using the Shannon index (Shannon, 1963). Species richness was proposed using the Margalef index (Margalef, 1985) and the Pielou Equitability index (Pielou, 1966) was used to identify the items distribution.

### Data analyses

The seasonal evaluation of ecological indices (dry and rainy) was performed by t-test. However, the Kolmogorov-Smirnov test was used to assess normality and thus allow the application of parametric statistics. For cases where there was no normal

distribution, a logarithmic transformation was performed as an attempt to apply the t-test. Data that did not present normal distribution, even after transformation, the Mann-Whitney test was applied (Zar, 1984).

The data were tested for homogeneity of variance using the Levene test to verify whether a one-way ANOVA could be used (Zar, 1984), with Tukey's posterior test. For data that did not meet the assumptions necessary to perform the one-way ANOVA, a Kruskal-Wallis test with Dunn's posterior test was used to compare several independent samples (groups) to assess significant differences in item quantification. Statistical analyzes were performed using the software Statistica 10.0 and Past 3.14 (Paleontological Statistics).

## RESULTS

The sample consisted of 359 specimens of the species *Lutjanus synagris*, 149 males and 210 females. The total length ranged from 24.9 to 53.3 cm, with an average of  $35.73 \pm 4.63$  cm for females and  $34.55 \pm 4.67$  cm for males (Student's t-test,  $p < 0.05$ ). The total weight of the organisms ranged from 180.0 to 972.26 g, with an average of  $483.13 \pm 114.80$  g for females and  $464.45 \pm 111.13$  g for males (Student's t-test,  $p < 0.05$ ). The maturity categories found were juveniles (24.9 to 27.9 cm) with 22 specimens and adults (28 to 53.3 cm) with 337 specimens. The distribution of the total length showed a tendency for the class of 36 to 40 cm for females, and 32 to 36 cm for males, with a high proportion of adult specimens for both sexes. The sex ratio in the study period was 1 female to 0.7 males. In general, there was no statistically

significant difference between these values at the 5% level (Calculated  $\chi^2 = 10.36 < \text{Table } \chi^2 = 19.67$ ).

The identification of food items in the 359 stomachs showed that 54 were empty by regurgitation and presented a coefficient of vacuity (Cv%) of 15.04%. The repletion degree found showed the following percentages: 31.20% specimens for degree 1; 22.28% for 2; 19.50% for 3; and 11.98% for 4. The Kruskal-Wallis test demonstrated that the degrees of repletion were affected by the sampling periods ( $p < 0.05$ ). Comparing the pairs for the degree of repletion by Dunn's posterior test, it was noticed that full stomachs were less representative than the other repletion classifications, presenting lower averages in the dry period and higher in the rainy period with a significant difference between February 2019 with the highest average, in relation to June and July 2018, and March 2019. The degree of repletion 1 presented a significant difference ( $p < 0.05$ ) in August 2018 and February 2019. There was no seasonal trend for the degree of repletion 2, however, there was a significant difference ( $p < 0.05$ ) in January 2019 compared to the others. The degree of repletion 3 showed a trend of higher averages in the months of February and March 2019, with January significantly lower than the others ( $p < 0.05$ ). It was observed that grade 4 had a significantly lower ( $p < 0.05$ ) average than the other groups in the months of August, October, and December 2018. However, the highest values for grade 4 were found from January 2019 to May 2019, the period of greatest rainfall (Figure 2).

The analysis of digestion degree of stomach contents showed that 44.63% were completely digested, 38.24% were semi-digested, and 17.13% were not digested. The stomachs with complete digestion presented repletion degree 1 in all samplings,

indicating that the food content in the stomach was composed by large amount of gastric mucus, and were more frequent in August 2018 and February 2019.

The diet presented a cumulative curve of 272 items, which were classified into 9 categories: Crustaceans, Mollusks, Porifera, Plants, Vertebrates, Annelids, Fish and Shrimp Fragments, Organic Matter Not Identified (OMNI), and Polymers. The identification of some items could be made in specific level due to the low action of the digestion (Table 1).

In the analysis of diets between the sexes, it was possible to identify a greater participation of fish (30.43%) and Crabs (26.10%) in the diet of females, Shrimp (36.23%) and OMNI (18.84%) in males. The prey consumed by the males was more diverse, with a higher occurrence of pelagic items. The comparison of diet between male and female did not show statistically significant differences (ANOVA,  $p > 0.05$ ). The numerical frequency analysis showed that the most abundant items in the stomachs of males and females of *L. synagris* were Crustaceans (34.91%), followed by Vertebrates (17.67%), OMNI (16.92%), and fish and shrimp fragments (9.56%). The numerical frequency of Mollusks, Annelids, Porifera, and Angiosperms/seaweeds unidentified represented together 15.42% of the items found in the stomachs.

The decapod crustaceans represented the most common prey found in the stomachs of *L. synagris* and they were represented by Brachyura and Caridea species. Mollusks were represented by Veneridae, Ostreidae, and Loliginidae. The identification of Porifera, Angiosperms, and Annelids was not refined because of their high digestion degree. The fishes were identified as species from the families Trichiuridae, Haemulidae, Ariidae,

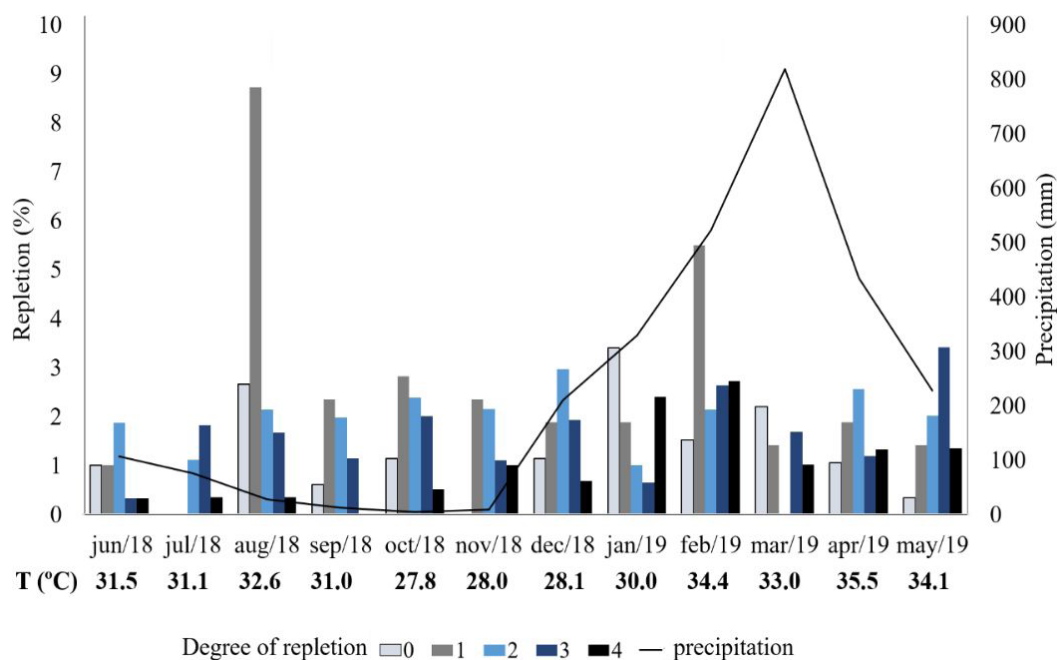


Figure 2. Stomach's repletion degree, monthly rainfall, and the average temperature in the study region.

**Table 1.** Prey consumed by *Lutjanus synagris* in the Amazon coast of the state of Maranhão, Brazil.

Prey Items	Dry (n = 131)			Rainy (n = 141)			General (n = 272)		
	%Fni	%FO	%IRI	%Fni	%FO	%IRI	%Fni	%FO	%IRI
<b>Crustaceans</b>									
Crustacean larva	3.05	3.15	0.41	2.13	1.02	0.12	2.57	2.09	0.26
<i>Callinectes</i> sp.	14.5	11.58	10.06	9.22	7.14	6.74	11.76	9.33	9.13
<i>Ucides cordatus</i>	5.34	2.11	0.57	2.84	1.02	0.22	4.04	1.55	0.4
<i>Penaeus</i> sp.	20.61	18.95	21.78	12.76	10.21	10.77	16.54	14.5	16.44
<b>Annelids</b>									
Polychaete	-	-	-	2.13	2.05	0.22	1.1	1.04	0.07
<b>Mollusks</b>									
<i>Anomalocardia</i> sp.	-	-	-	2.13	3.06	0.33	1.1	1.55	0.1
<i>Crassostrea</i> sp.	-	-	-	2.13	2.05	0.22	1.1	1.04	0.07
<i>Loligo</i> sp.	-	-	-	3.54	5.1	1.44	1.83	2.6	0.5
<b>Porifers</b>									
Sponges	-	-	-	5.68	6.13	2.32	2.94	3.1	0.75
<b>Vegetables</b>									
Angiosperms/ seaweeds unidentified	7.64	7.37	2.21	7.09	4.09	1.38	7.35	5.7	1.86
<b>Vertebrates</b>									
Trichiuridae	2.29	2.11	0.46	4.25	4.08	1.43	3.32	3.1	0.9
Haemulidae	1.52	2.11	0.23	7.81	11.2	4.57	4.78	6.73	1.73
Ariidae	2.29	2.11	0.36	2.84	3.06	0.71	2.58	2.6	0.53
Mugilidae	8.39	3.15	1.29	5.67	4.08	1.53	6.99	3.63	1.45
<b>Others</b>									
Fish and Shrimp Fragments	13.75	18.94	17.96	5.67	5.1	4.08	9.56	11.92	10.73
OMNI	16.04	22.11	43.19	17.73	25.51	62.08	16.92	23.83	53.36
Polymers	4.58	6.31	1.48	6.38	5.1	1.84	5.52	5.7	1.72

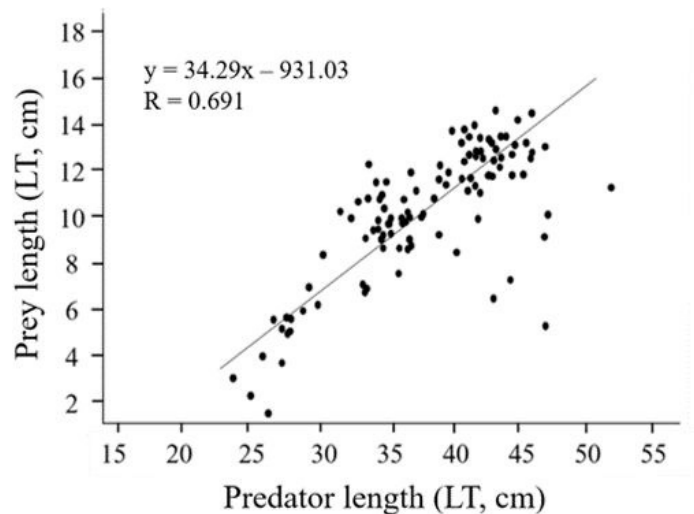
%Fni = numerical frequency of items; %FO = frequency of occurrence of items; %IRI = relative importance index of items). OMNI = Organic Matter Not Identified.

and Mugilidae. The other components found can be considered accidental or occasional due to their low frequency.

The diet composition in relation to the maturity category of the *L. synagris* showed that the diet of juveniles was predominantly composed of OMNI (42.5%) and Angiosperms/seaweeds unidentified (17.5%). Fish and shrimp fragments were the third most frequent items found in the stomach contents (15%). The diet included larvae of Decapods, Mollusks, Polychaetes, and Porifera, however, with a lower frequency of occurrence. The diet of adults was predominantly composed of Crustaceans (35.83%), followed by Vertebrates (24.42%), and OMNI (24.42%). Four families of Teleosts were found as prey to adults. Remains of bivalves and gastropods were also present in small amounts. The analysis of the diet per length class showed a consistent pattern: organisms that presented longer lengths consumed larger and heavier prey, whereas juveniles consumed smaller prey and more organisms in suspension (Figure 3). The class groups of organisms showed significant differences in diet analysis and were influenced by the size of the body and trophic dynamics (ANOVA,  $p < 0.05$ ).

The stomach content analysis showed presence of synthetic materials as mesoplastic sizes (5.0 mm – 2.5 cm) in 5.52% of the specimens. A total of 15 plastic particles were found in the

stomachs of 11 specimens. These compounds were represented by nylon fiber (2.12%), swab cable (0.84%), expanded polystyrene (2.36%), and plastic bags (0.72%). The occurrence of polymers



**Figure 3.** Predator length vs. prey length scatter diagram for *Lutjanus synagris*.

is significant in the sampling, and only specimens smaller than 28 cm did not show the ingestion of polymers.

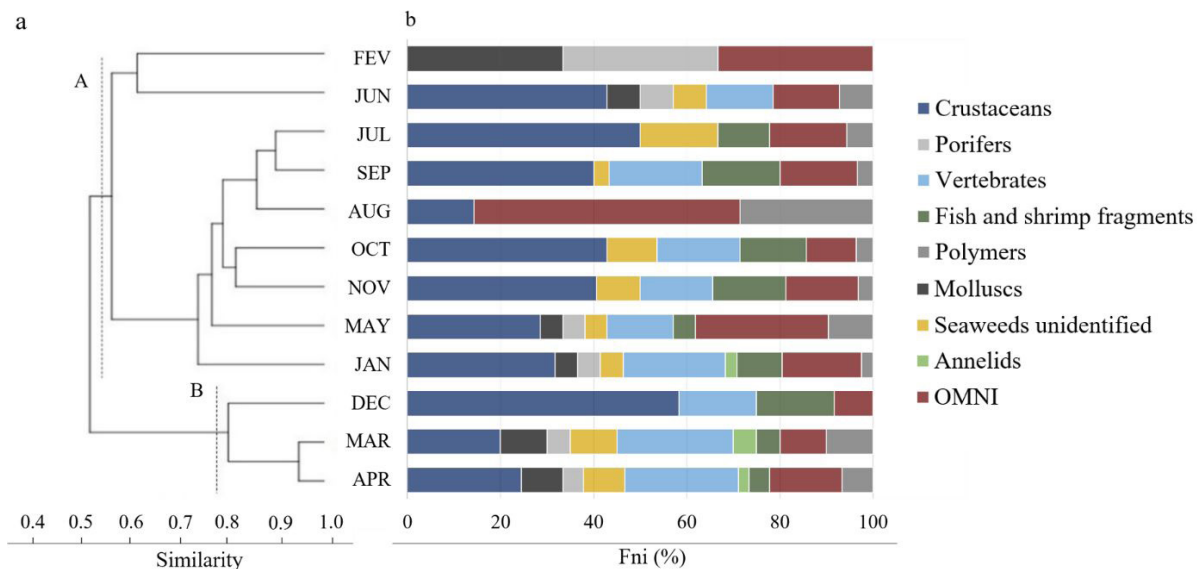
The temporal variance of the diet and feeding strategy of *L. synagris* for grouped sexes formed two different groups after the analysis through similarity dendrogram for the sampling period and %Fni. The group *a* had similarity of 55%, represented by January, February, May, and June in the rainy season and by July, August, September, October, and November in the dry season, presenting a diet predominantly composed of Crustaceans and OMNI. The group *b* had a similarity of 80%, represented by March and April in the rainy season and by December in the dry season. The main items consumed in group *b* were Crustaceans and Vertebrates. The months that presented best grouping were July and September for group *a*, and March and April for group *b* (Figure 4a-b).

Crustaceans, Fish and Shrimp fragments and OMNI were the most consumed items during the dry months in the Amazon coast in the state of Maranhão. *Penaeus sp.* and *Callinectes sp.* were the most frequent and essential food in the diet of *L. synagris* in this period, while Annelids, Mollusks, and Porifera were not found in their diet. OMNI was the most frequent item in rainy months, but the diet was more diversified, with a record of different organisms, such as Mollusks (*Crassostrea sp.* and *Loligo sp.*) and high occurrence of Teleosts (Haemulidae) and Crustaceans. This can be explained by the contribution and frequency of food items during the seasons of the year in the sampling area, which presented significant differences in the abundance of items in June, September, March, and April (Kruskal-Wallis,  $p < 0.05$ ).

The *L. synagris* diet was significantly influenced by trophic dynamics and seasonality (Kruskal-Wallis,  $p < 0.05$ ). Crustaceans,

Fish, Shrimp fragments, and OMNI were the most consumed items during the dry months on the Amazon coast of the state of Maranhão. *Penaeus sp.* and *Callinectes sp.* were the most frequent and essential foods in the diet of *L. synagris* in this period, while Annelids, Mollusks and Porifera were not found in their diet. OMNI was the most frequent item in the rainy months, but the diet was more diversified, with records of different organisms, such as Mollusks (*Crassostrea sp.* and *Loligo sp.*) and a high occurrence of Teleosts (Haemulidae) and Crustaceans. This can be explained by the contribution and frequency of food items during the seasons in the sampling area. After comparing with the pairs by Dunn's posterior test, an abundance of items was noticed in June, September, March, and April.

The relationship between ecological indexes and seasonality did not show significant differences (Student's t-test,  $p > 0.05$ ) for the set of data referring to diversity and equitability. However, for dominance and richness, there was significant stationary variation (Mann-Whitney,  $p < 0.05$ ). The Simpson dominance index (D) calculated in this study showed a value of 0.69 for the rainy season. The Shannon diversity index (H') points to a low diversity for the two periods of seasonality. The richness of the items shows that the rainy season had a higher value, however, in none of the seasons, there was a great wealth of items. The Pielou (J) equitability value of 0.56 shows that 56% of the maximum theoretical diversity was obtained through the analysis of food items, representing a relatively uniform distribution of all items for the rainy season (Table 2).



**Figure 4.** Prey consumed by *Lutjanus synagris* in the Amazon coast of the state of Maranhão, Brazil **a.** Dendrogram for cluster analysis of the similarity between June 2018 and May 2019 of *Lutjanus synagris* samples. **b.** Percentage of the numerical frequency of items found (%Fni). OMNI = Organic Matter Not Identified.

**Table 2.** Ecological indexes referring to seasonality during the period of collection of *Lutjanus synagris* samples. Values are shown as average plus standard deviation.

Ecological Indexes	Dry	Rainy
Dominance - Simpson D	0.19±0.12*	0.69±0.31*
Diversity - Shannon H	1.80±0.23	1.85±1.22
Richness - Margalef	1.79±1.27*	2.41±2.02*
Equitability - Pielou J	0.35±0.10	0.56±0.27

\* = significant difference by the Mann-Whitney,  $p < 0.05$ .

## DISCUSSION

The analysis showed intense feeding activity for specimens of *L. synagris*, which had degrees of stomach repletion indicating daily or continuous feeding in their area of occurrence. However, the frequency of repletion in full condition was higher in the rainy season. Some stomachs of *L. synagris* were empty due to regurgitation, indicating that the organisms cannot withstand the pressure variation at the time of capture due to the expansion of the gas in their swimming bladder that compresses the stomach wall during the hauling, which makes them everted. Fonteles Filho (1969), Ogawa and Menezes (1972) found similar results regarding the feeding activity and the number of stomachs everted at the time of capture in studies on the feeding of *L. purpureus* in the Northeast region of Brazil.

Regarding digestion, stomachs that presented only mucus as stomach content can indicate that these organisms present a fast metabolism. Moreover, the digestion degree is probably related to the temperature because the increase in temperature increases the metabolism of the animal (Lolis and Andrian, 1996). According to Kamukuru and Mgaya (2004), Schwartzkopf et al. (2017) the amount of food consumed by Lutjanidae species is clearly influenced by the parameters such as tide, time of day, and place of capture. Juárez-Camargo et al. (2020) analyzing the variability of the eating habits of *L. synagris* and *L. griseus* on the coast of Campeche obtained a low repletion index (30%) and a moderate degree of digestion of the items, corroborating that digestion also it is influenced by the number of acids secreted in the stomachs and by the presence of a much shorter intestine in carnivorous fish, making digestion faster (Lagler et al., 1997). However, the large proportion of empty stomachs can also reflect methodological problems, such as the method of capture, photoperiod, the way organisms are stored for transport, as well as the distance from the place of capture to the laboratory (Zavala Camin, 1996).

The *L. synagris* showed preference for benthic prey, presenting carnivorous and generalist-opportunist habits; their diet is also composed by demersal-pelagic species, such as cephalopods and teleost fishes. According to Duarte and Garcia (1999), Pimentel and Joyeux (2010), the diet of *L. synagris* is composed of small crustaceans, small teleosts, polychaetes, and mollusks with strong correlation with the benthic environment, which classifies the

species as a generalist opportunist predator of demersal habit. According to the feeding groups found, the demersal resources were the most representative and crustaceans presented the highest frequency of occurrences. Although fish intake increased in the diet according to the species ontogeny, this food did not stand out among the other food items.

The results of the present study showed a difference in food items between size classes, denoting the importance of these items for the species; and that *L. synagris* responds to changes in the availability of potential prey. Greater interaction with the environment occurs as this species develops and food resources become more diverse, presenting preference by larger prey. Thus, some morphological adaptations and transformations in these organisms and some changes related to the ontogenetical conditions of their feeding can determine the diet composition (De Melo Rosa et al., 2015; Hernandez et al., 2018). The presented results confirm those obtained by Szedlmayer and Lee (2004), who found a higher frequency of crustaceans and fishes in adult specimens of *L. synagris* in the Gulf of Mexico, with a similar pattern for other marine fish species.

Studies in the Northeast Region of Brazil and in areas of occurrence of *L. synagris* report the importance of these food resources in the diet of Lutjanidae species (Randall, 1967; Sánchez, 1994; Guevara et al., 1994; Sierra, 1997; Sierra et al., 2001; Claro and Lindeman, 2004; Monteiro et al., 2009; Freitas and Abilhoa, 2011). Trophic guilds were identified, among the food items, as benthic, demersal, and pelagic organisms. Contrastingly, despite the great variability of food items consumed, few of them predominated in the diet of *L. synagris*. Similar results were found by Franks e VanderKooy (2000), Kamukuru and Mgaya (2004) for *Lutjanus fulviflamma* in Tanzania.

The diet of a given species is related to the morphology and feeding behavior, as well as the constitution and availability of food resources to the specific conditions of the environment. The most representative foods items in the diet of *L. synagris*, such as decapods and teleosts, are characterized as abundant in the continental shelf of the Northeast Region of Brazil, due to the favorable environmental conditions for their reproduction, feeding, and maintenance. In addition, the Amazon coast of Maranhão is rich in coastal estuarine and marine areas, which contributes to the development of many fish and crustaceans (D'Incao, 1998; Costa et al., 2003; Santos et al., 2006; Boos et al., 2016).

The diet composition can change depending on the location, capture period, and fishing technique. This is confirmed by Duarte and Garcia (1999) in a study about the diet of *L. synagris* in the Gulf of Salamanca, Colombia, which showed that these dependences are related to the capture logistic and characteristics of the local epifauna. Valdés and Silva (1977) showed that *L. synagris* in an artificial reef area in Cuba presented a diet predominantly composed of fishes 56% represented by the species *Opsanus phobetron*.

According to the results of the IRI%, Brachyuras, Penaeidae, and Haemulidae were the most representative prey groups. Similar results showed that congener species, such as *L. fulviflamma* in Tanzania, presented a diet predominantly composed by crustaceans, with shrimps representing 40% of the IRI% (Kamukuru and Mgaya, 2004). The food preference of *L. synagris* on crustaceans

confirms that the main forage area of this species is next to the oceanic substrate. However, Rashednikov et al. (1974) and Sierra and Claro (1979) pointed out that the importance of Brachyura may be due to the higher rates of food digestion.

The correlation between the sampling period and the seasonality, temperature and intensity of the rains showed changes in the composition of the *L. synagris* diet. The diet of the specimens showed a dominance by crustaceans (Penaeidae and Brachyuras) during the dry period and a diet rich in OMNI in the rainy months. Food resources in the Amazon coast of the state of Maranhão are abundant during the rainy season because estuarine systems are the main providers of nutrients, maintaining high rates of primary productivity and biomass contents, contributing directly or indirectly to the biodiversity and productivity in the coastal zone. This is strongly explored by Goulding (1980), Gerking (1994), and Wootton (1999) in studies on the effect of seasonality on feeding habits of aquatic organisms; and by Dittmar (1999), Castro (1997), and Silva Júnior et al. (2013) in coastal areas of Maranhão.

The diversity and richness indexes showed that the diversity of food items was higher in rainy months than in dry months. The maximum number of food items was found in the rainy months. This is due to increases in the amount of nutrients disperse in coastal environments because of high rainfall depths. According to Yanez-Arancibia (1985), the temperature, which is related to rainfall depths and nutrients available in coastal environments, affect the diversity of species. Similar result was reported by Ribeiro et al. (2012), who found higher diversity of food items during the winter season in the Ilha dos Caranguejos, in Maranhão. The diversity and richness index found in the present study was higher than those reported by Yisa et al. (2011) and Brazil et al. (2009), denoting a relatively richer biodiversity.

The fishing area of *L. synagris* in the coast of Maranhão has transition regions that are defined by geological oceanographic processes that favor the emergence of high-productivity areas (Floeter et al., 2001), which affect the trophic ecology of the ichthyic communities in these ecosystems. The state of Maranhão presents a complete hydrographical network with rivers, estuaries, and coral areas (Martins and De Oliveira, 2011). This environment contributes to the dynamics of Lutjanidae species, which use such locations for shelter and feeding because of the rich diversity of food resources and their easy capture, making them faster than their prey (Randall, 1967; Lowe-McConnell, 1999).

The feeding behavior of an animal is related to the environmental conditions and availability of food resources and reproductive period (Sierra et al., 2001). Thus, species that have prey capture activity related to reef environments present feeding strategies that allow them to explore diverse aquatic environments, contributing to an extensive trophic chain with great plasticity for adaptation to food availability (Ross and Moser, 1995; Monteiro et al., 2009; Pimentel and Joyeux, 2010).

The present study provided evidence of ingestion of plastic particles and residues by *L. synagris* in the state of Maranhão. The Lutjanidae species have many feeding strategies and most tropical fishes have the capacity of adaptation to diets according to the food availability (Pimentel and Joyeux, 2010; Nelson, 2016).

However, when the food chain is unbalanced because of marine pollution, many species suffer with environmental problems, resulting in behavioral changes, competition for resources, and threats to immediate predation. Plastic residues were found in tissues of marine and estuarine fishes in the Northeast region of Brazil (Possatto et al., 2011; Miranda and Carvalho-Souza, 2016; Pegado et al., 2018). The proportion of microplastic found on estuarine fishes by Ramos et al. (2012) showed a higher ingestion level (13.4%) than that found in the present study (5.70%).

The anthropogenic residues are dispersed by transference and circulation processes that contribute to the accumulation of fragments in oceanic environments (Woodall et al., 2014; Van Cauwenberghe et al., 2015). Moving of marine fluids, saline subduction, and other oceanographic processes over coasts near river mouths can contribute to the concentration of residues in marine sediments (Talley et al., 2002; Stabholz et al., 2013). Studies related to the feeding habits of demersal-pelagic fish have shown an association of polymer intake in the diet in areas at east of the Mediterranean Sea (Anastasopoulou et al., 2013). Romeo et al. (2015) point out that these particles are more frequently ingested by generalist organisms that consume small abundant prey, which is a characteristic consistent with the feeding habits of *L. synagris*.

## CONCLUSION

The feeding habits of *L. synagris* in a coastal area in northeastern Brazil indicated a wide variety of items consumed, associated with the amount of stomachs with food, showing that the species is a non-selective predator, whose feeding is apparently directed to the relationship with the seasonality and population structure of the captured organisms, with the substrate and with the food availability.

The data of the present study showed an essential evaluation on the feeding habit of *L. synagris*, once such studies are scarce in Brazil; the results also presented a discovery of ingestion of plastic residues by the species, denoting that the study about this species can be a tool for evaluation of ecosystems regarding impacts and contamination by plastics to better understand the magnitude of this problem and, thus, develop measures for its mitigation in areas where these organisms reproduce and feed.

## ACKNOWLEDGMENTS

The authors would like to thank the Fisheries Biology Laboratory (BioPesq) and the Maranhão Integrated Coastal Management Laboratory (LagercoMA) for their logistical support and the State University of Maranhão (UEMA) for financing the research.



## REFERENCES

- Almeida, Z.S. 2008. Os recursos pesqueiros marinhos e estuarinos do Maranhão: Biologia, tecnologia, socioeconomia, estado da arte e manejo, Belém, Pará. 286f. (Tese de Doutorado. Universidade Federal do Pará, UFPA). Available at: <<http://repositorio.ufpa.br:8080/jspui/handle/2011/3426>>. Accessed: Oct. 07, 2018.
- Anastasopoulou, A.; Mytilineou, C.; Smith, C.J.; Papadopoulou, K.N. 2013. Plastic debris ingested by deep-water fish of the Ionian Sea (Eastern Mediterranean). Deep-sea Research. Part I, Oceanographic Research Papers, 74: 11-13. <https://doi.org/10.1016/j.dsr.2012.12.008>.
- Bentes, B.; Isaac, V.J.; Espírito-Santo, R.V.D.; Frédou, T.; Almeida, M.C.D.; Mourão, K.R.M.; Frédou, F.L. 2012. Multidisciplinary approach to identification of fishery production systems on the northern coast of Brazil. Biota Neotropica, 12(1): 81-92. <https://doi.org/10.1590/S1676-06032012000100006>.
- Bezerra, R.C.; Godelman, E. 2014. As pescarias de vermelhos no Brasil: características, estado dos estoques e subgerências para melhorar a gestão. CEDEPESCA. 38p. Available at: <[http://cedepesca.net/wp-content/uploads/2015/08/As\\_pescarias\\_de\\_vermelhos\\_no\\_Brasil\\_final.pdf](http://cedepesca.net/wp-content/uploads/2015/08/As_pescarias_de_vermelhos_no_Brasil_final.pdf)>. Accessed: Jun. 12, 2018.
- Boos, H.; Costa, R.; Santos, R.A.; Neto, J.D.; Rodrigues, E.S.; Rodrigues, L.F.; Coelho, P.A. 2016. Avaliação dos camarões peneídeos (Decapoda: Penaeidae). In: Pinheiro, M.; Boos, H. (Eds.). Livro vermelho dos crustáceos do Brasil: Avaliação 2010-2014. Porto Alegre: Sociedade Brasileira de Carcinologia, p. 300-317.
- Brazil, S.C.; Marques, R.M.; Albrecht, M.P. 2009. Segregação alimentar entre duas espécies de Heptapteridae no Rio Macaé, RJ. Biota Neotropica, 9(3): 31-37. <https://doi.org/10.1590/S1676-06032009000300002>.
- Brown-Peterson, N.J.; Wyanski, D.M.; Saborido-Rey, F.; Macewicz, B.J.; Lowerre-Barbieri, S.K. 2011. A standardized terminology for describing reproductive development in fishes. Marine and Coastal Fisheries, 3(1): 52-70. <https://doi.org/10.1080/19425120.2011.555724>.
- Carpenter, K.E. 2002a. The living marine resources of the western central atlantic. Introduction, mollusks, crustaceans, hagfishes, sharks, batoid fishes and chimaeras. Rome: FAO. 599p.
- Carpenter, K.E. 2002b. The living marine resources of the Western Central Atlantic: bony fishes part 1 (Acipenseridae to Grammatidae). Rome: FAO. 1373p.
- Castro, A.C.L. 1997. Características ecológicas da ictiofauna da Ilha de São Luis – MA. Boletim do Laboratório de Hidrobiologia, 10: 1-18.
- Cerqueira, V.R.; Carvalho, C.V.C.; Sanches, E.G.; Passini, G.; Baloi, M.; Rodrigues, R.V. 2017. Manejo de reprodutores e controle da reprodução de peixes marinhos da costa brasileira. Revista Brasileira de Reprodução Animal, 41: 94-102.
- Cervigón, F.R.; Cipriani, W.; Fischer, L.; Garibaldi, M.; Hendrickx, A.; Lemus, R.; Márquez, J.M.; Poutiers, G.; Robaina, E.; Rodriguez, B. 1992. Fichas FAO de identificação de espécies para as multas de la pesca. Guía de campo de las especies comercias marinas y de aguas salobres da costa septentrional de Sur América. Roma: FAO. 513p.
- Claro, R.K.; Lindeman, C. 2004. Biología y manejo de los pargos (Lutjanidae) en el Atlántico occidental. La Habana: Instituto de Oceanología, CITMA. 472p.
- Costa, P.A.S.; Olavo, G.; Martins, A.S. 2005. Áreas de pesca e rendimentos da frota de linheiros na região central da costa brasileira entre Salvador-BA e o Cabo de São Tomé-RJ. In: Costa, P.A.S.; Martins, A.S.; Olavo, G. (eds). Pesca e potenciais de exploração de recursos vivos na região central da Zona Econômica Exclusiva brasileira. Rio de Janeiro: Museu Nacional. p.57-70.
- Costa, R.C.; Fransozo, A.; Melo, G.A.S.; Freire, F.A.M. 2003. An illustrated key for Dendrobranchiata shrimps from the northern coast of São Paulo State, Brazil. Biota Neotropica, 3(1): 1-12. <https://doi.org/10.1590/S1676-06032003000100011>.
- D’Incao, F. 1998. Malacostraca. Eucarida. Dendrobranchiata. In: Young, P.S. (ed.) Catalogue of Crustacea of Brazil. Rio de Janeiro: Museu Nacional. p. 311-321.
- De Melo Rosa, D.; Vilar, C.C.; Musiello-Fernandes, J. 2015. Relative effect of seasonality and body size on the diet of juvenile *Lutjanus synagris* (Perciformes: Lutjanidae) at a sandy beach in southeastern Brazil. Boletim do Instituto de Pesca, 41(1): 19-29.
- Dittmar, T. 1999. Outwelling of organic matter and nutrients from a mangrove in North Brazil: Evidence from organic tracers and flux measurements, Bremen, Germany. Bremen. 229f. (Ph.D. Thesis. Zentrum für Marine Tropenökologie. Bremen Universität).
- Dorenbosch, M.; Grol, M.G.G.; Christianen, M.J.A.; Nagelkerken, I.; Van Der Velde, G. 2005. Indo-Pacific seagrass beds and mangroves contribute to fish density and diversity on adjacent coral reefs. Marine Ecology Progress Series, 302: 63-76. <https://doi.org/10.3354/meps302063>.
- Duarte, L.O.; García, C.B. 1999. Diet of the lane snapper, *Lutjanus synagris* (Lutjanidae), in the Gulf of Salamanca, Colombia. Caribbean Journal of Science, 35: 54-63.
- Falautano, M.; Castriota, L.; Finoia, M.G.; Andaloro, F. 2007. Feeding ecology of little tunny *Euthynnus alletteratus* in the central Mediterranean Sea. Journal of the Marine Biological Association of the United Kingdom, 87(4): 999-1005. <https://doi.org/10.1017/S0025315407055798>.
- Ferreira, B.P.S.; Rezende, M.; Teixeira, S.F.; Frédou, T.; Duarte Ferreira, Y. 2004. In: Lessa, R.P.; Nóbrega, M.F.; Bezerra Junior, J.L. (orgs). Dinâmica de Populações e Avaliação dos Estoques dos Recursos Pesqueiros da Região Nordeste. Recife: REVIZEE (Programa de Avaliação Sustentável dos Recursos Vivos da Zona Econômica Exclusiva do Brasil). 246f.
- Fischer, W. 1978. FAO species identification sheets for fishery purposes. Western 387 Central Atlantic (fishing area 31). v. 1-7. Roma: FAO.
- Floeter, S.R.; Guimarães, R.Z.P.; Rocha, L.A.; Ferreira, C.E.L.; Rangel, C.A.; Gasparini, J.L. 2001. Geographic variation in reef-fish assemblages along the Brazilian coast. Journal of Biogeography, 10(4): 423-431. <https://doi.org/10.1046/j.1466-822X.2001.00245.x>.
- Fonteles Filho, A.A. 1969. Estudo preliminar sobre a pesca do pargo, *Lutjanus purpureus* Poey, no nordeste brasileiro. Arquivo de Ciências do Mar, 9(1): 83-88.
- Fonteles Filho, A.A. 2011. Oceanografia, biologia e dinâmica populacional de recursos pesqueiros. Fortaleza, CE: Editora Expressão Gráfica. 460p.
- Franks, J.S.; VanderKooy, K.E. 2000. Feeding Habits of juvenile Lane Snapper *Lutjanus synagris* from Mississippi Coastal Waters, with comments on the diet of Gray Snapper *Lutjanus griseus*. Gulf and Caribbean Research, 12(1): 11-17. <https://doi.org/10.18785/gcr.1201.02>.

- Frédou, T.; Ferreira, B.P. 2005. Bathymetric trends of northeastern Brazilian snappers (Pisces, Lutjanidae): implications for the reef fishery dynamic. *Brazilian Archives of Biology and Technology*, 48(5): 787-800. <https://doi.org/10.1590/S1516-89132005000600015>.
- Frédou, T.; Ferreira, B.P.; Letourneur, Y. 2009. Assessing the stocks of the primary snappers caught in Northeastern Brazilian reef systems. Traditional modelling approaches. *Fisheries Research*, 99(2): 90-96. <https://doi.org/10.1016/j.fishres.2009.05.008>.
- Freitas, M.O.; Abilhoa, V. 2011. Feeding ecology of *Lutjanus analis* (Teleostei: Lutjanidae) from Abrolhos Bank, Eastern Brazil. *Neotropical Ichthyology*, 9(2): 411-418. <https://doi.org/10.1590/S1679-62252011005000022>.
- Gerking, S.D. 1994. *Feeding ecology of fish*. San Diego: Academic Press. 399p.
- Gomes, G.; Sampaio, I.; Schneider, H. 2012. Population Structure of *Lutjanus purpureus* (Lutjanidae-Perciformes) on the Brazilian coast: further existence evidence of a single species of red snapper in the western Atlantic. *Anais da Academia Brasileira de Ciências*, 84(4): 979-999. <https://doi.org/10.1590/S0001-37652012000400013>.
- Goulding, M. 1980. *The fishes and the forest: explorations in Amazon natural history*. Berkeley: University of California Press, 292p.
- Grimes, C.B. 1987. Reproductive biology of the Lutjanidae: a review. In: Polovina, J.J.; Ralston, S. (Eds.). *Tropical snappers and groupers: biology and fisheries management*. Westview Press: Boulder. p.239-294.
- Guevara, E.; Bosch, A.; Suárez, R.; Lalana, R. 1994. Alimentación natural de tres especies de pargos (Pisces: Lutjanidae) en el Archipiélago de los Canarros. *Revista de Investigación Marina*, 15: 63-72.
- Hacunda, J.S. 1981. Trophic relationships among demersal fishes in a coastal area of the Gulf of Marine. *Fish Bulletin*, 79: 775-788.
- Hernandez, C.; Sanchez-Gutierrez, E.Y.; Ibarra-Castro, L.; Pena, E.; Gaxiola, G.; De La Barca, A.M.C. 2018. Effect of dietary taurine supplementation on growth performance and body composition of snapper, *Lutjanus colorado* juvenile. *Turkish Journal of Fisheries and Aquatic Sciences*, 18(10): 1227-1233. [https://doi.org/10.4194/1303-2712-v18\\_10\\_09](https://doi.org/10.4194/1303-2712-v18_10_09).
- Hoese, H.D.; Moore, R.H. 1998. *Fishes of the Gulf of Mexico, Texas, Louisiana, and adjacent waters*. College Station, Texas; Texas A&M University Press. 422p.
- IBGE - Instituto Brasileiro de Geografia e Estatística. 2010. Censo Demográfico 2010. Available at: <<https://www.ibge.gov.br/geociencias/cartas-e-mapas/mapas-regionais/15819-amazonia-legal.html?=&t=o-que-e>> Accessed: Aug. 12, 2018.
- Isaac, V.J.; Barthem, R.B. 1995. Os recursos pesqueiros da Amazônia Brasileira. *Boletim do Museu Paraense Emílio Goeldi. Série Antropologia*, 11(2): 295-339.
- Isaac-Nahum, V.J. 2006. Exploração e manejo dos recursos pesqueiros do litoral amazônico: um desafio para o futuro. *Ciência e Cultura*, 58(3): 33-36.
- Juárez-Camargo, P.G.; Sosa-López, A.; Torres-Rojas, Y.E.; Mendoza-Franco, E.F.; Aguiñiga García, S. 2020. Feeding habits variability of *Lutjanus synagris* and *Lutjanus griseus* in the littoral of Campeche, Mexico: an approach of food web trophic interactions between two snapper species. *Latin American Journal of Aquatic Research*, 48(4): 552-569. <https://doi.org/10.3856/vol48-issue4-fulltext-2453>.
- Kamukuru, A.T.; Mgaya, Y.D. 2004. The food and feeding habits of blackspot snapper, *Lutjanus fulvivlamma* (Pisces: Lutjanidae) in shallow waters of Mafia Island, Tanzania. *African Journal of Ecology*, 42(1): 49-58. <https://doi.org/10.1111/j.0141-6707.2004.00487.x>.
- Kjerfve, B.; Perillo, G.M.E.; Gardner, L.R.; Rine, J.M.; Dias, G.T.M.; Mochel, F.R. 2002. Morphodynamics of muddy environments along the Atlantic coasts of North and South America. In: Healy, T.R.; Wang, Y.; Healy, J.A. (Eds.). *Muddy Coasts of the World: Processes, Deposits and Functions*. New York: Elsevier. p. 479-532.
- Klippel, S.; Olavo, G.; Costa, P.A.S.; Martins, A.S.; Peres, M.B.; Klippel, S.; Olavo, G. 2005. Avaliação dos estoques de lutjanídeos da costa central do Brasil: análise de coortes e modelo preditivo de Thompson e Bell para comprimentos. In: Costa, P.C.; Martins, A.S.; Olavo, G. (Eds.). *Pesca e potenciais de exploração de recursos vivos na região central da Zona Econômica Exclusiva brasileira*. Rio de Janeiro: Museu Nacional. p. 83-98.
- Lagler, K.F.; Bardach, J.E.; Miller, R.R.; Passino, D.R.M. 1997. *Ichthyology*, 2nd ed. New York: J. Wiley. 528p.
- Lavrado, H.P.; Sá Viana, M. 2007. *Atlas de invertebrados marinhos da região central da Zona Econômica Exclusiva brasileira*. Rio de Janeiro: Museu Nacional. 258p.
- Layman, C.A. 2000. Fish assemblage structure of the shallow ocean surf-zone on the eastern shore of Virginia Barrier Islands. *Estuarine, Coastal and Shelf Science*, 51(2): 201-213. <https://doi.org/10.1006/ecss.2000.0636>.
- Lessa, R.P.; Nóbrega, M.F.; Bezerra Júnior, J.L.; Santana, F.M.; Duarte Neto, P.J.; Hazin, F.H.V.; Monteiro, A. 2004. Dinâmica de populações e avaliação de estoques dos recursos pesqueiros da região nordeste. Recife: DIMAR. 246p.
- Lolis, A.A.; Andrian, I.F. 1996. Alimentação de *Pimelodus maculatus lacépde*, 1803 (siluriformes, pimelodidae) na planície de inundação do alto rio paraná, Brasil. *Boletim do Instituto de Pesca*, 23: 187-202.
- Lowe-McConnell, R.H. 1999. *Estudos ecológicos de comunidades de peixes tropicais/Ecological studies in tropical fish communities*. São Paulo: Edusp. 535p.
- Lowerre-Barbieri, S.K.; Ganas, K.; Saborido-Rey, F.; Murua, H.; Hunter, J.R. 2011. Reproductive timing in marine fishes: variability, temporal scales, and methods. *Marine and Coastal Fisheries*, 3(1): 71-91. <https://doi.org/10.1080/19425120.2011.556932>.
- Margalef, R. 1985. Temporal succession and spatial heterogeneity in phytoplankton. In: Buzzati-Traverso, A.A. (ed.). *Perspectives in marine biology*. Berkeley: University of California. p. 323-349.
- Martins, M.B.; De Oliveira, T.G. 2011. *Amazônia maranhense: diversidade e conservação*. Belém: Museu Paraense Emílio Goeldi. 328p.
- Mccawley, J.R.; Cowan Júnior, J.H.; Shipp, R.L. 2006. Feeding periodicity and prey habitat preference of red snapper, *Lutjanus campechanus* (Poey, 1860) on Alabama artificial reefs. *Gulf of Mexico Science*, 24(1): 1-14. <https://doi.org/10.18785/goms.2401.04>.
- Menezes, N.A.; Buckup, P.A.; Figueiredo, J.L.; Moura, R.L. 2003. *Catálogo das espécies de peixes marinhos do Brasil*. São Paulo: Museu de Zoologia da Universidade de São Paulo. 164p.
- Miranda, D.A.; Carvalho-Souza, G.F. 2016. Are we eating plastic-ingesting fish? *Marine Pollution Bulletin*, 103(1-2): 109-114. <https://doi.org/10.1016/j.marpolbul.2015.12.035>.

- Montagner, C.C. 2018. Microplásticos: contaminantes de preocupação global no Antropoceno. *Revista Virtual de Química*, 10(6): 1968-1989. <https://doi.org/10.21577/1984-6835.20180125>.
- Monteiro, D.P.; Giarrizzo, T.; Isaac, V. 2009. Feeding ecology of juvenile dog snapper *Lutjanus jocu* (Bloch and Shneider, 1801) (Lutjanidae) in intertidal mangrove creeks in Curuçá Estuary (Northern Brazil). *Brazilian Archives of Biology and Technology*, 52(6): 1421-1430. <https://doi.org/10.1590/S1516-89132009000600014>.
- Mora, C. 2015. Ecology of fishes on coral reefs. Cambridge: Cambridge University Press. 774p.
- Nagelkerken, I.; Van Der Velde, G.; Gorissen, M.W.; Meijer, G.J.; Van't Hof, T.; Den Hartog, C. 2000. Importance of mangroves, seagrass beds and the shallow coral reef as a nursery for important coral reef fishes, using a visual census technique. *Estuarine, Coastal and Shelf Science*, 51(1): 31-44. <https://doi.org/10.1006/ecss.2000.0617>.
- Nelson, J.S. 2016. Fishes of the world. 5th ed. New York: John Wiley & Sons. 752p.
- Ogawa, E.F.; Menezes, N.A. 1972. Alimentação do pargo *Lutjanus purpureus* Poey, no nordeste brasileiro. *Arquivo de Ciências do Mar*, 12(2): 105-108.
- Peel, M.C.; Finlayson, B.L.; McMahon, T.A. 2007. Updated world map of the Köppen–Geiger climate classification. *Hydrology and Earth System Sciences*, 11(5): 1633-1644. <https://doi.org/10.5194/hess-11-1633-2007>.
- Pegado, T.S.S.; Schmid, K.; Winemiller, K.O.; Chelazzi, D.; Cincinelli, A.; Dei, L.; Giarrizzo, T. 2018. First evidence of microplastic ingestion by fishes from the Amazon River estuary. *Marine Pollution Bulletin*, 133: 814-821. <https://doi.org/10.1016/j.marpolbul.2018.06.035>.
- Pielou, E.C. 1966. The measure of diversity in different types of biological collections. *Journal of Theoretical Biology*, 13: 131-144. [https://doi.org/10.1016/0022-5193\(66\)90013-0](https://doi.org/10.1016/0022-5193(66)90013-0).
- Pimentel, C.R.; Joyeux, J.C. 2010. Diet and food partitioning between juveniles of mutton *Lutjanus analis*, dog *Lutjanus jocu* and lane *Lutjanus synagris* snappers (Perciformes: Lutjanidae) in a mangrove-fringed estuarine environment. *Journal of Fish Biology*, 76(10): 2299-2317. <https://doi.org/10.1111/j.1095-8649.2010.02586.x>.
- Pinkas, L.; Oliphant, M.S.; Iverson, I.L.K. 1971. Food habit of albacore, bluefin tuna and bonito in Californian Waters. *Fish Bulletin*, 152: 1-105.
- Possatto, F.E.; Barletta, M.; Costa, M.F.; Do Sul, J.A.I.; Dantas, D.V. 2011. Plastic debris ingestion by marine catfish: An unexpected fisheries impact. *Marine Pollution Bulletin*, 62(5): 1098-1102. <https://doi.org/10.1016/j.marpolbul.2011.01.036>.
- Ramos, J.A.A.; Barletta, M.; Costa, M.F. 2012. Ingestion of nylon threads by Gerreidae while using a tropical estuary as foraging grounds. *Aquatic Biology*, 17: 29-34. <https://doi.org/10.3354/ab00461>.
- Randall, J.E. 1967. Food habits of reef fishes of the West Indies. *Studies in Tropical Oceanography*, 5: 665-847.
- Rashetnikov, Y.; Claro, R.; Silva, A. 1974. Ritmo alimentario y velocidad de digestión de algunos peces depredadores tropicales. *Serie Oceanología*, 21: 1-13.
- Rezende, S.M.; Ferreira, B.P.; Frédou, T. 2003. A pesca de lutjanídeos no nordeste do Brasil: histórico das pescarias, características das espécies e relevância para o manejo. *Boletim Técnico Científico. CEPENE*, 11: 56-63.
- Ribeiro, E.B.; Almeida, Z.S.; Carvalho-Neta, R.N.F. 2012. Hábito alimentar do bagre *Sciaedes herzbergii* (Siluriformes, Ariidae) da Ilha dos Caranguejos, Maranhão, Brasil. *Arquivo Brasileiro de Medicina Veterinária e Zootecnia*, 64(6): 1761-1765. <https://doi.org/10.1590/S0102-09352012000600048>.
- Romeo, T.; Pietro, B.; Pedà, C.; Consoli, P.; Andaloro, F.; Fossi, M.C. 2015. First evidence of presence of plastic debris in stomach of large pelagic fish in the Mediterranean Sea. *Marine Pollution Bulletin*, 95(1): 358-361. <https://doi.org/10.1016/j.marpolbul.2015.04.048>.
- Ross, S.W.; Moser, M.L. 1995. Life history of juvenile gag *Mycteroperca microlepis*, in North Carolina estuaries. *Bulletin of Marine Science*, 56(1): 222-237.
- Sale, P.F. 1991. The ecology of fishes on coral reefs. San Diego: Academic Press. 754p.
- Sánchez, A. 1994. Feeding habits of *Lutjanus apodus* (Osteichthyes: Lutjanidae) in Laguna de Términos, Southwest Gulf of Mexico. *Revista de Investigaciones Marinas*, 15: 125-134.
- Santana, I. 2016. Ecologia reprodutiva de Lutjanidae no litoral norte da Bahia, Brasil: contribuições ao manejo sustentável da pesca artesanal, Vigo, Espanha. 357f. (Tese de Doutorado. Universidade de Vigo). Available at: <<http://hdl.handle.net/11093/830>> Accessed: Jul. 11, 2018
- Santos, M.C.F.; Pereira, J.Á.; Ivo, C.T.C.; Souza, R.F.C. 2006. Crescimento do camarão branco *Litopenaeus schmitti* (Burkenroad, 1936) (Crustacea, Decapoda, Penaeidae) no Nordeste do Brasil. *Boletim Técnico Científico*, 14(1): 59-70.
- Saraiva, N.A. 2009. Caracterização da unidade e temas complementares: Reserva Extrativista Marinha do Delta do Parnaíba. Brasília: ICMBIO. 103p.
- Schwartzkopf, B.D.; Langland, T.A.; Cowan, J.R.; James, H. 2017. Habitat selection important for Red Snapper feeding ecology in the northwestern Gulf of Mexico. *Marine and Coastal Fisheries*, 9(1): 373-387. <https://doi.org/10.1080/19425120.2017.1347117>.
- Shannon, C.E.W. 1963. The mathematical theory of communication. Urbana: University Illinois Press; 117p.
- Sierra, L.M. 1997. Relaciones tróficas de los jóvenes de cinco especies de pargos (Pisces: Lutjanidae) en Cuba. *Revista de Biología Tropical*, 44: 499-506.
- Sierra, L.M.; Claro, R. 1979. Variación estacional de la velocidad de digestión en dos especies de peces Lutjanidos, la biajaiba (*Lutjanus synagris*) y el Caballerote (*Lutjanus griseus*). *Ciências Biológicas*, 3: 87-98.
- Sierra, L.M.; Claro, R.; Popova, A.O. 2001. Trophic biology of the marine fishes of Cuba. In: Claro, R.; Lindeman, K.C.; Parenti, L.R. (eds.). Ecology of the marine fishes of Cuba. Washington and London: Smithsonian Institution Press. p. 115-148.
- Silva Júnior, M.G.; Castro, A.C.L.D.; Saint-Paul, U.; Porto, H.L.R. 2013. Caracterização da ictiofauna de três canais de maré do estuário do rio Paciência, ilha de São Luís, estado do Maranhão. *Arquivos de Ciências do Mar*, 46: 5-21.
- Simpson, E.H. 1949. Measurement of Diversity. *Nature*, 163: 688. <https://doi.org/10.1038/163688a0>.

- Stabholz, M.; Durrieu de Madron, X.; Canals, M.; Khripounoff, A.; Taupier-Letage, I.; Testor, P.; Heussner, S.; Kerhervé, P.; Delsaut, N.; Houpert, L.; Lastras, G.; Dennielou, B. 2013. Impact of open-ocean convection on particle fluxes and sediment dynamics in the deep margin of the Gulf of Lions. *Biogeosciences*, 10: 1097-1116. <https://doi.org/10.5194/bg-10-1097-2013>.
- Stride, R.K. 1992. Diagnóstico da pesca artesanal marinha do estado do Maranhão. Maranhão: EdUFMA. 205p.
- Sturges, H.A. 1926. The choice of a class interval. *Journal of the American Statistical Association*, 21(153): 65-66.
- Szedlmayer, S.T.; Lee, J.D. 2004. Diet shifts of juvenile red snapper (*Lutjanus campechanus*) with changes in habitat and fish size. *Fish Bulletin*, 102(2): 366-375.
- Talley, J.W.; Ghosh, U.; Tucker, S.G.; Furey, J.S.; Luthy, R.G. 2002. Particle-scale understanding of the bioavailability of PAHs in sediments. *Environmental Science & Technology*, 36(3): 477-483. <https://doi.org/10.1021/es010897f>.
- Valdés, E.; Silva, A. 1977. Alimentación de los peces de arrecifes artificiales en la plataforma suroccidental de Cuba. *Informe Científico Técnico*, 24: 1-21.
- Van Cauwenberghe, L.; Claessens, M.; Vandegehuchte, M.B.; Janssen, C.R. 2015. Microplastics are taken up by mussels (*Mytilus edulis*) and lugworms (*Arenicola marina*) living in natural habitats. *Environmental Pollution*, 199: 10-17. <https://doi.org/10.1016/j.envpol.2015.01.008>.
- Wells, R.J.D.; Cowan, J.H.; Fry, B. 2008. Feeding ecology of red snapper *Lutjanus campechanus* in the northern Gulf of Mexico. *Marine Ecology Progress Series*, 361: 213-225. <https://doi.org/10.3354/meps07425>.
- Woodall, L.C.; Sanchez-Vidal, A.; Canals, M.; Paterson, G.L.J.; Coppock, R.; Sleight, V.; Calafat, A.; Rogers, A.D.; Narayanaswamy, B.E.; Thompson, R.C. 2014. The deep sea is a major sink for microplastic debris. *Royal Society Open Science*, 1(4): 140317. <https://doi.org/10.1098/rsos.140317>.
- Wootton, R.J. 1999. *Ecology of teleost fishes*. 2nd ed. Dordrecht: Kluwer Academic Publishers. 386p.
- Yanez-Arancibia, A. 1985. The estuarine nekton: why and how an ecological monograph. In: Yanez-Arancibia, A. (ed.). *Eish community ecology in estuaries and coastal lagoons: Towards an ecosystem interaction*. México: UNAM Press. pp.1-8.
- Yisa, T.A.; Adeyemi, R.A.; Ibrahim, I. 2011. Evaluation of diversity index of fish fauna in a lowland rice field in Southern Guinea Savannah of Northern Nigeria. *International Journal of Science and Nature*, 2(4): 809-812.
- Zar, J.H. 1984. *Biostatistical analysis*. 2nd ed. Englewood-Cliffs, NJ: Prentice-Hall. 718p.
- Zavala Camin, L.A. 1996. *Introdução aos estudos sobre alimentação natural em peixes*. Maringá: EdUFM. 129p.